

Assembling the system

What's inside?



The SV 277 PRO kit consists of two carrying cases. The main unit is a waterproof carrying case with internal 17 Ah battery and internal charging unit supporting powering from external DC or solar panel. The SVAN 977 Class 1 sound level meter is installed inside.

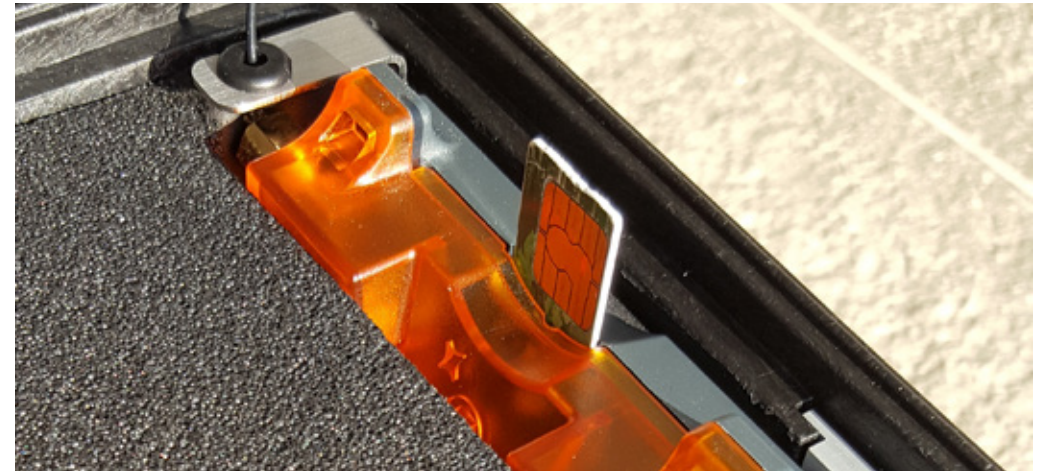
The outdoor charger and outdoor microphone kit are packed inside the second transportation case. The kit includes license for SvanPC++ software and SvanNET base account. Each kit has its factory calibration certificate and 36 months warranty card.

Before you go on site

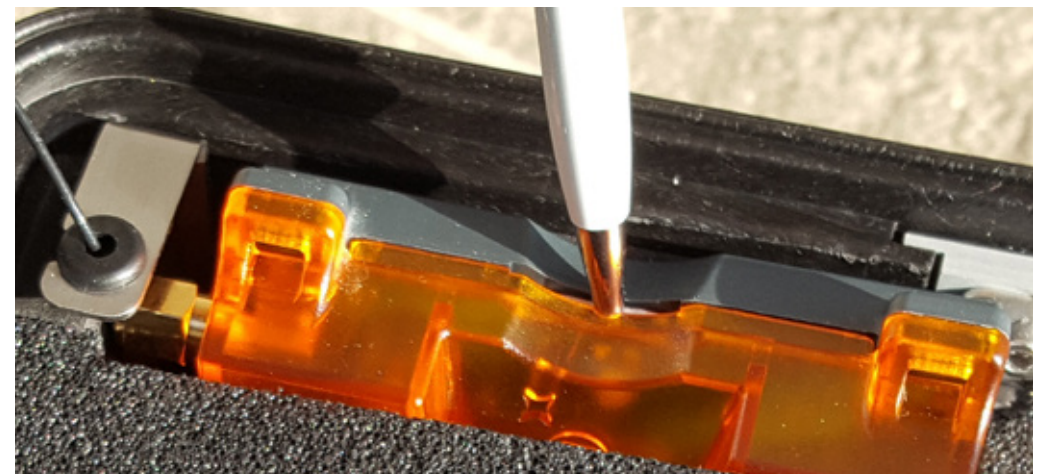
1) It is strongly advised to configure the remote communication before going on site. Start from opening the SV 277 Pro station. Locate the 3G modem on the right-hand side of the case.



2) Insert a normal SIM card into the slot in the modem. The SIM card PIN protection must be disabled.



3) A click sound indicates that the SIM card is in the right orientation. If necessary use a tool (e.g. pen) to push the SIM right in.

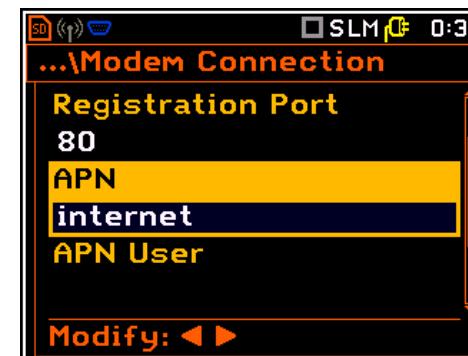
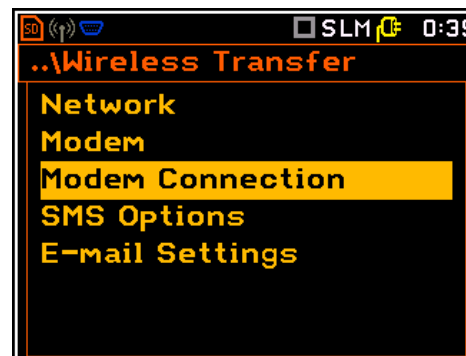
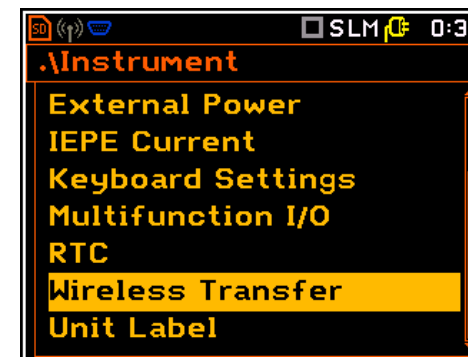


4) Press **Alt+Start** on SVAN 977 to turn on the system.



Access Point Name

1) The station is programmed to automatically establish a 3G connection with SvanNET. It takes up to 5 minutes to connect. The most important parameter of the connection is the APN (Access Point Name). The default setting for the APN is "internet". It's possible that your Internet provider is using a different APN, in which case the APN must be entered manually, either via the PC software or the SVAN977 menu - Instrument/Wireless Transfer.



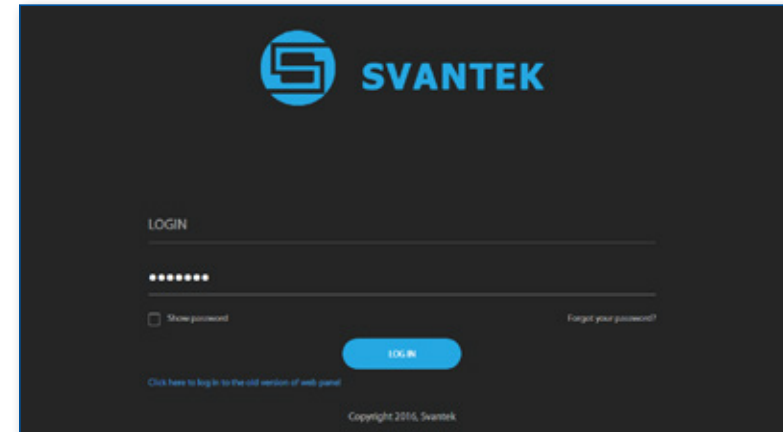
Connection to SvanNET

About SvanNET



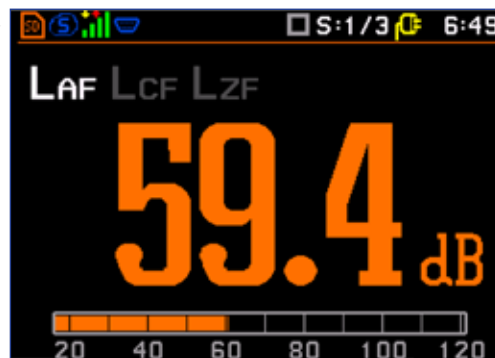
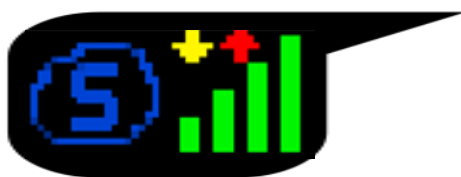
SvanNET enables an easy configuration of remote connection, monitors connection stability, measurements and station status (e.g. powering). The advanced architecture of SvanNET is hidden behind a new user-friendly web interface accessible from all devices with web-browsers. The web interface allows viewing of the current measurement results, editing settings and downloading measurement data from multiple noise & vibration monitoring stations

2) To access SvanNET, log in to your account at: <https://www.svanet.com/panel-login.php>

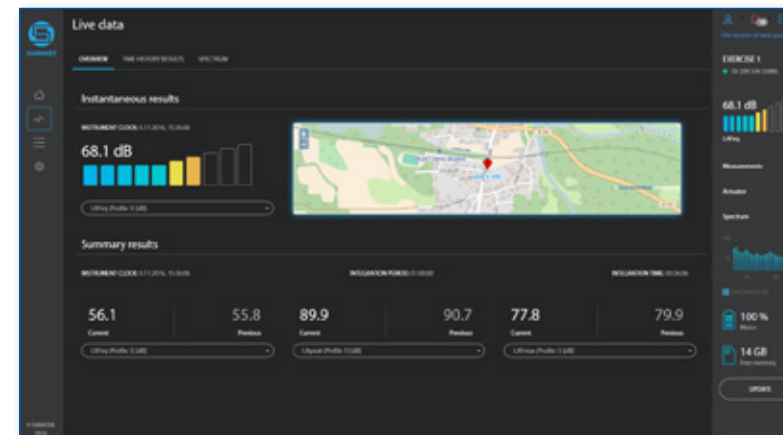


Connection to SvanNET

1) Successful connection to SvanNET is indicated by an icon on a SVAN 977 display:



3) Once logged in you can use the web interface to manage the monitoring station:



Assembling the hardware

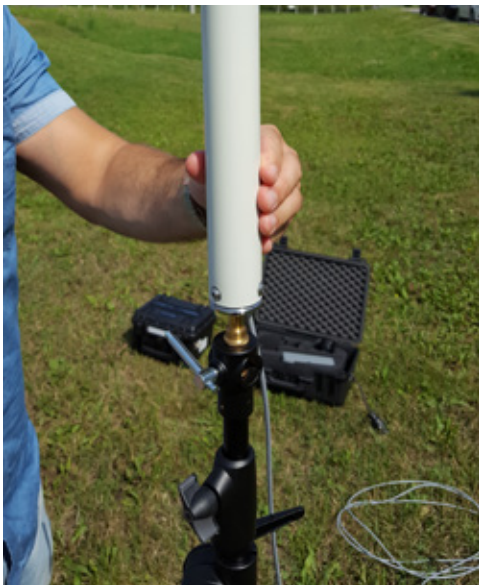
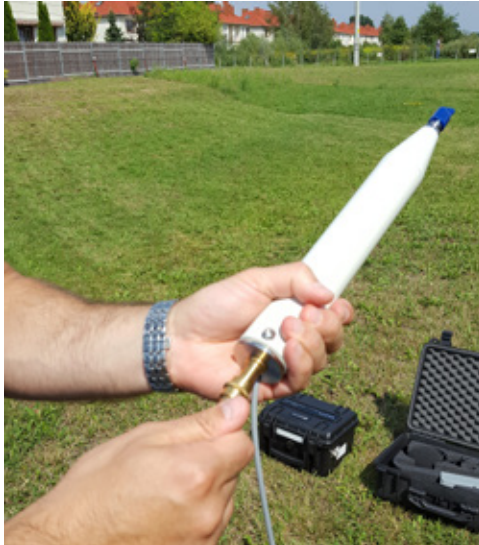
1) The system consists of 2 carrying cases. Before use check the serial numbers on labels located on the side of both cases and ensure they are a set.



2) Open the case with accessories and take out the SA277 microphone outdoor kit.



3) Mount the SA277 on a tripod (not included).



4) Remove the protection from the input socket on the case by turning it in the counter-clockwise.



5) To connect the microphone extension cable start by lining up mark on the plug and INPUT socket, then lock the connector by turning the ring clockwise (only the ring close to the socket will rotate).



6) Connect the power supply cable to the DC Supply socket in the same way.



7) Press **Alt+Start** on SVAN 977 to turn on the system.



8) Remove the protection cap from the microphone and perform calibration check.



9) Remove the anti-bird spike with foam from the accessories case.



10) Push the foam upwards and mount the tube on the thread.



11) Slide the foam down so it hides the metal parts of the kit.



12) The station now is ready for use.



13) To disconnect cables push the connector towards the station and turn it counter-clockwise. New connectors require more force so using a closed hand is more effective than using just fingers.



SB 272 External Battery (option)

About



The SB 272 is an external battery for the noise and vibration monitoring stations: SV 271, SV 277, SV 279 and SV 258A. The battery capacity of 33 Ah enables three times longer operating time of the monitoring station in comparison to the built-in 17 Ah battery.

The SB 272 is portable, as it is housed in a waterproof case. A cable with military connectors for connection between SB272 and the monitoring case is provided. The SB 272 is rechargeable with a SB 273 indoor charger.

Before you go on site

1) It is advised to charge the batteries of SV 277 PRO and SB 272 before going on site. Each unit has its own charger: SB 270 is a waterproof charger for SV 277 PRO, SB 273 is an indoor charger for SB 272. Connection of the external battery uses the SC272 cable. Once connected, the station will recognize the SB 272 external battery automatically and use it as a power source.

2) Connect the 4-pin connector of SC 272 to the DC Supply socket on the SV 277 PRO case:



3) Connect the 3-pin connector of SC 272 to the DC Supply socket on the SB 272 case:



Air pressure compensation valve

Close the valve before you leave

Each case monitoring system is equipped with an air pressure compensation valve that must be closed when station is used outdoors, otherwise the system is not sealed against moisture ingress. The valve needs to be opened before opening the case lid. The valve is on the front of the case.



Should your SVANTEK professional measurement equipment need to be returned for repair or for calibration, please contact the service office at the following number or contact via the SVANTEK's website.

Service Office: +48 (22) 51-88-320 or +48 (22) 51-88-322.
Office hours are 9:00 a.m. to 5:00 p.m. Central European Time.
-E-mail at office@svantek.com
-Internet at www.svantek.com
-Address:

SVANTEK Sp. z o.o.
Strzygłowska 81
04-872 Warszawa,
Poland

