

# HOW TO CONNECT YOUR AIRLY TO SVANNET

## Step 1: Complete the Airly Form and Receive Login Details

- Visit the Airly installation website: <https://installation.airly.org>
- Complete the form on the website. Ensure you provide all necessary details.
- After submitting the form, you will receive a response from Airly within 24 hours.
- Once your form is approved, Airly will provide you with login details.

## Step 2: Request Installation ID Number from Airly Support

- Once you have received your login credentials, email [support@airly.org](mailto:support@airly.org) to request an Installation ID number.
- This Installation ID will be necessary for setting up a measurement point on SvanNET.

**If you wish to make your data private, make sure to request this via email to Airly.**

## Step 3: Create a Project in SvanNET Portal



The screenshot shows the SvanNET Portal project creation form. The form has a dark background with white text and input fields. The fields are: Project name (AcSoft- NVD), Project location, Project description, External data integration (with a dropdown arrow), Airly Data Integration - API Key (with a Learn more... link), South Coast Science Data Integration - API Key (with a Learn more... link), EMSOL Data Integration - API Key (with a Learn more... link), EMSOL Data Integration - API Endpoint URL, and Language (used for project alarms & Project View tokens) with a dropdown showing flags for UK, France, Spain, Germany, Italy, and Brazil. At the bottom, there is a red button labeled DELETE PROJECT and two buttons labeled OK and CANCEL.

Log in to the svanNet portal: Visit the Airly installation website: <https://installation.airly.org>.

Once logged in, go to the Project List section.

Click on Add New Project.

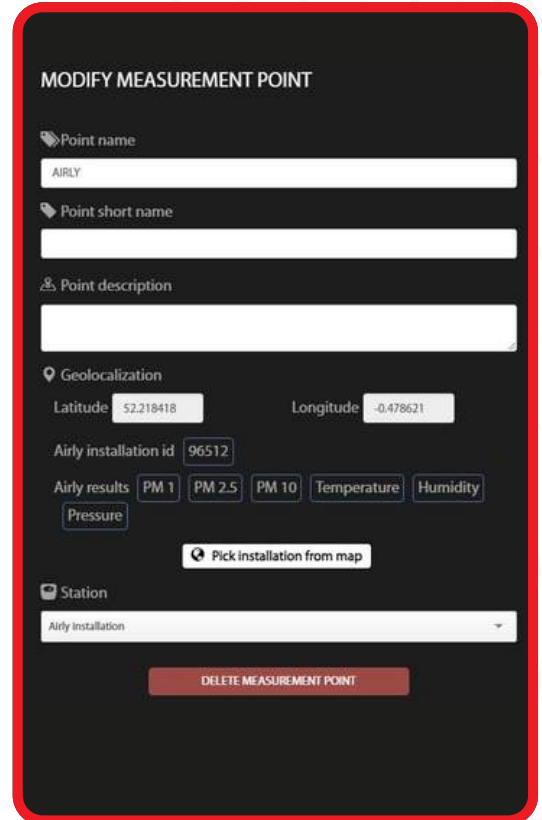
Provide a name for the project (e.g., "XXXX") and enter the API Key:



## Step 3: Create a Project in SvanNET Portal

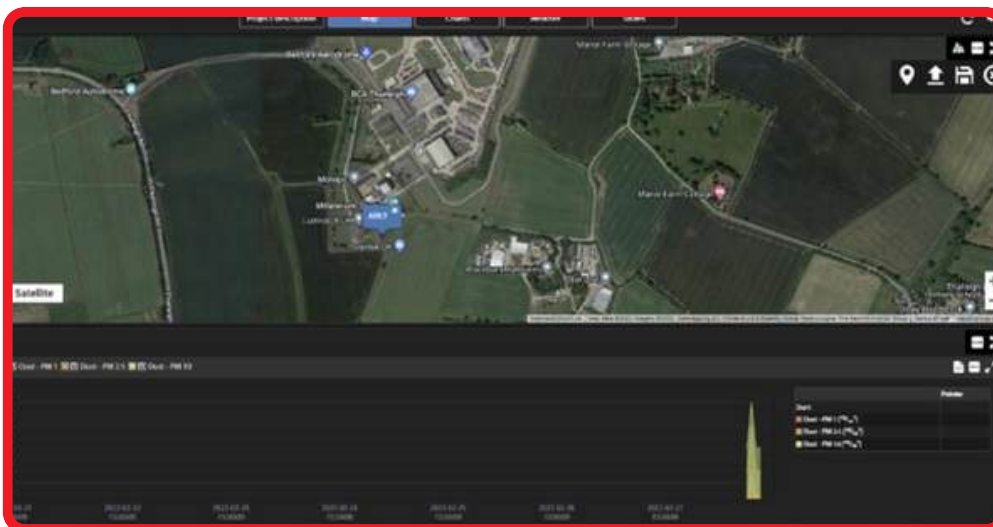
Under the newly created project, select Modify Measurement Point.

Point Name:	AIRLY
Point Short Name:	(as needed)
Point Description:	(as needed)
<hr/>	
<b>Geolocalisation</b>	
Latitude:	52.218418
Longitude:	-0.478621
<hr/>	
Airly Installation ID:	Enter the unique ID received from Airly support (e.g., 96512).
<hr/>	
Airly Results:	Select the following data points you want to monitor:
	<div>PM 1</div> <div>PM 2.5</div> <div>PM 10</div>
<hr/>	
Pick Installation from Map	Choose the appropriate Airly installation.



## Step 5: Verify Data Transmission

- After successfully setting up the measurement point, you should start seeing data flow within 10-15 minutes.
- You should see the following data values appear:



CHECK OUT THE  
GUIDE ONLINE